



Bracknell Gardens, London NW3 7EB

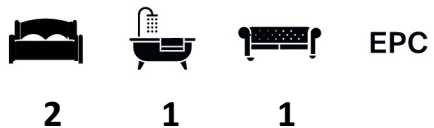
WAYNE
& SILVER

Bracknell Gardens, London NW3 7EB

A charming two bedroom first-floor apartment set within a converted red-brick Victorian house, benefitting from well-maintained communal gardens and a resident building housekeeper. Ideally located within easy reach of the shops, cafés and transport links of Hampstead Village, including the Northern Line.

The accommodation comprises a bright reception room, a fully equipped separate kitchen, a principal double bedroom with built-in storage, a second double bedroom and a family bathroom.

Two Bedrooms | Family Bathroom | Reception Room | Separate Kitchen
| Communal Gardens



Guide price: £3,100 Per Month



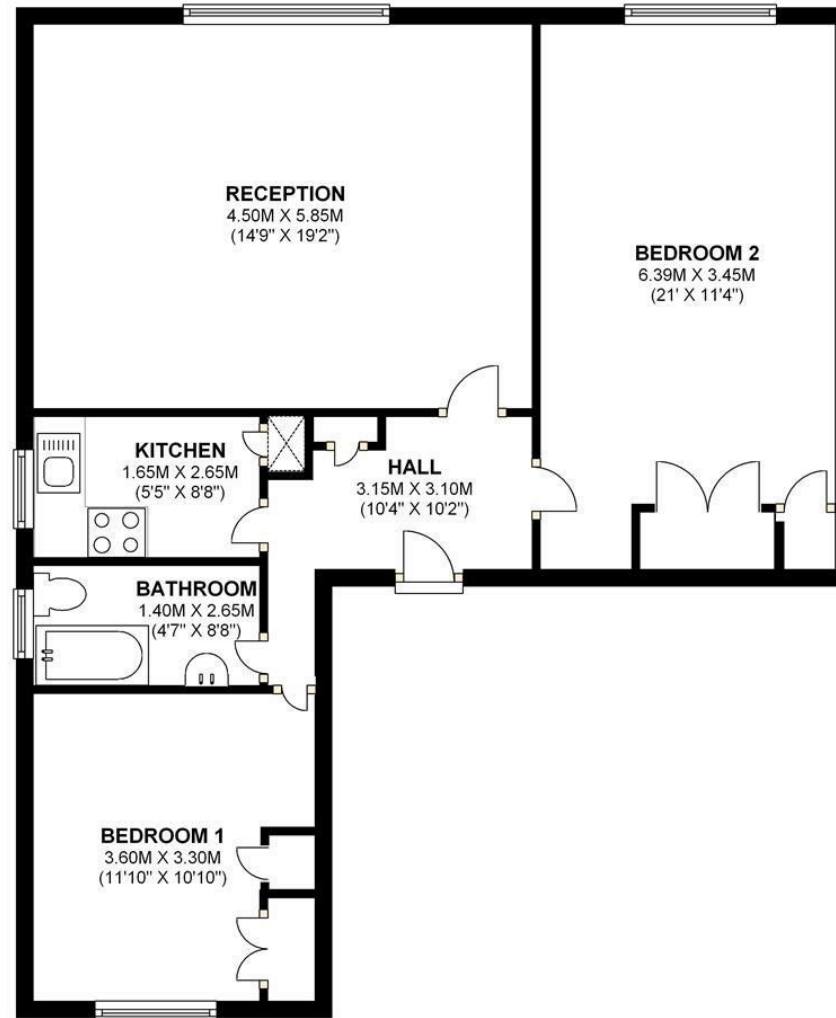






FIRST FLOOR

APPROX. 74.6 SQ. METRES (803.3 SQ. FEET)



TOTAL AREA: APPROX. 74.6 SQ. METRES (803.3 SQ. FEET)

41 Heath Street
Hampstead
London
NW3 6UA

We would be delighted to tell you more
020 7431 4488
info@wayne-silver.com

wayne-silver.com

Important Notice: Wayne & Silver, its clients and any joint agents give notice that 1: They are not authorised to make or give any representations or warranties in relation to the property either here or elsewhere, either on their own behalf or on behalf of their client or otherwise. They assume no responsibility for any statement that may be made in these particulars. These particulars do not form part of any offer or contract and must not be relied upon as statements or representations of fact. 2: Any areas, measurements or distances are approximate. The text, photographs and plans are for guidance only and are not necessarily comprehensive. It should not be assumed that the property has all necessary planning, building regulation or other consents and Wayne & Silver have not tested any services, equipment or facilities. Purchasers must satisfy themselves by inspection or otherwise.